

# THE BAR DOES **NOT** RAISE ITSELF

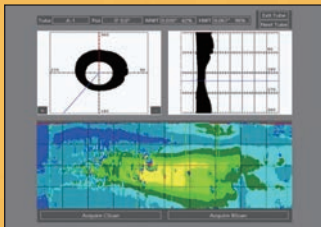
## INTRODUCING THE **NEXT GENERATION** OF HEAT EXCHANGER INSPECTION

Representing the seventh generation of the IRIS system, the **IRIS 9000 Plus** has more than 30 years of field inspection experience incorporated in its design.

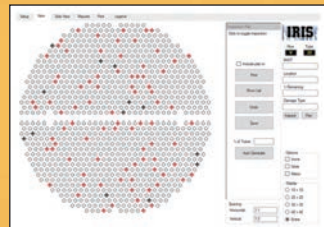
This experience combined with a strong commitment to quality and a history of innovation has made **IRIS INSPECTION SERVICES, INC.** the undisputed leader in IRIS technology.



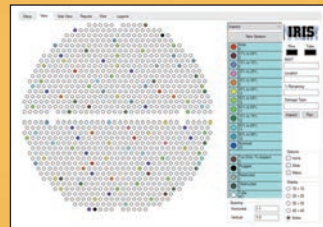
### NEW IRIS-VISION 5.0 : THE COMPLETE IRIS CONTROL SYSTEM & REPORTING SOFTWARE



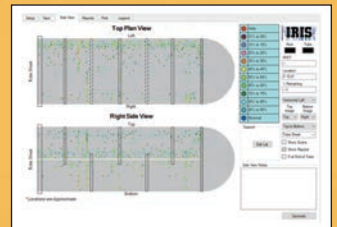
REAL TIME C-SCAN



REAL TIME INSPECTION PLANS



TUBE MAPPING DISPLAY



SIDE VIEW DISPLAY



This state-of-the-art portable instrument was designed to operate reliably and accurately in the harsh conditions that are found in petrochemical and industrial plants worldwide.

[iris-inspection.com](http://iris-inspection.com) • +1-281-424-3200 • [sales@iris-inspection.com](mailto:sales@iris-inspection.com) • Houston, TX



**A GOOD INSPECTION  
DOESN'T COST. *IT PAYS***

Representative in Korea



엠케이씨코리아®  
M.K.C KOREA



# IRIS 9000 PLUS SPECIFICATIONS

NEXT GENERATION PERFORMANCE WITH PULLING SPEEDS OF UP TO 5 TIMES AS FAST

## HARDWARE

<b>Channels</b>	1 pulse echo
<b>Pulse Voltage</b>	200-300 V
<b>Bandwidth</b>	48 MHz
<b>Transducer Frequency</b>	15 MHz
<b>Maximum Pulsing Rate</b>	up to 13 kHz
<b>A-Scan Length</b>	scalable 255 points
<b>Turbine Speed</b>	up to 200 rps
<b>Min Wall Thickness</b>	.229mm (0.009")
<b>Max Wall Thickness</b>	35mm ( 1.380")
<b>Probe Recognition</b>	AUTO
<b>Hardware Monitoring</b>	continual calibration, improved fault & probe monitoring
<b>Encoder</b>	quadrature
<b>Remote</b>	drive motor direction & speed control
<b>Syncing</b>	improved syncing, auto adjust to turbine speed
<b>Interface (Dual)</b>	Hardware or software control
<b>Chassis</b>	rugged reinforced and braced aluminum
<b>Dimensions</b>	31 cm L x 26 cm W x 17cm H 7kg
<b>Temperature Range</b>	-18°C to 46°C (0°F to 115°F)
<b>Input Voltage</b>	100-240v • 50-60Hz

## SOFTWARE

<b>Realtime Views</b>	B- and C-scan realtime MWT readings, image and control settings recorded, user defined alarm limits
<b>Setup Display Profilometry Display</b>	B-Scan wall thickness, minimum wall thickness, adjustable cursor and color coded
<b>Cursors</b>	cross-section cursors: auto or manual pit sizing
<b>Measurement</b>	wall remaining, wall loss and percentages
<b>OS</b>	Windows 10
<b>Inspection Plans</b>	manual or auto-generated
<b>Reporting</b>	on-site report generation including tube sheet maps, exchanger side view, B- and C-scan screen captures and more



Representative in Korea



엠케이씨코리아®  
M.K.C KOREA

